



2014

**INTERNATIONAL 420 CLASS WORLD CHAMPIONSHIP
INTERNATIONAL 420 CLASS LADIES WORLD CHAMPIONSHIP**

**Lübeck Yacht Club
Travemünde, Germany
25th July – 3rd August 2014**

NOTICE OF RACE

Organising Authority:
Lübeck Yacht Club and

In conjunction with:
German 420 Class Association
Deutscher Segler Verband
and the
International 420 Class Association

1. RULES

- 1.1** The regatta will be governed by the Rules as defined in the Racing Rules of Sailing (RRS).
- 1.2** RRS Appendix P, Special Procedures for Rule 42, will apply.
- 1.3** No Class Rules change will apply.
- 1.4** No National Authority prescriptions will apply.
- 1.5** If there is a conflict between languages the English text will take precedence.

2. ADVERTISING AND BOW NUMBER

- 2.1** Boat may be required to display bow numbers and /or advertising chosen and supplied by the Organising Authority.
- 2.2** In accordance with ISAF Regulation 20.4.3, competitors aboard the boats ranking first, second, and third in the series at the beginning of that day shall wear yellow, blue and red bibs respectively while racing. The bibs will be provided by the Organising Authority.

3. EVENTS FORMAT

Each event will consist of a qualifying series and a final series.

3.1 Qualifying series – 6 races schedule for each event, crews will be divided into fleets.

- the number of fleets will be as defined below:
 - One fleet up to 50 boats,
 - Two fleets from 51 to 100 boats,
 - Three fleets for more than 100 boats.

The numbers of fleets may be changed by the O.A. when the total number of entries are marginal to the limits stated in this NoR.

3.2 Final series – 6 races schedule for each event, crews in the qualifying series will be divided into final fleets according to the final scores of the qualifying series.

There will be the same number of fleets as in the qualifying series.

The fleets will have approximately the same number of crews in each.

The Gold fleet will consist of the first part of the final scores of the qualifying series, Silver fleet of the second part, and so on.

If there would be fewer than 50 entries at an event, then the championship will be competed in one separated fleet (single series) with 12 final races.

4. EVENTS SCHEDULE

Day 1 25 th July	Registration and equipment inspections	0900-1900
Day 2 26 th July	Registration and equipment inspections	0900-1900
Day 3 27 th July	Registration and equipment inspections Practice Race: warning signal Opening Ceremony	0900-1600 1500 1900
Day 4 28 th July	Qualifying series	1200
Day 5 29 th July	Qualifying series	TBA
Day 6 30 th July	Qualifying series	TBA
Day 7 1 st August	Qualifying/Final series	TBA
Day 8 2 nd August	Qualifying/Final series	TBA
Day 9 3 rd August	Qualifying/Final series Prize Giving and Closing Ceremony	TBA 1800

No warning signal will be given on the last day after 16:00

5. ELIGIBILITY

5.1 The championships are only open to International **420** dinghies.

5.2 ISAF eligibility according to **ISAF Regulation 19** is required of all athletes.

5.3 Each competitor shall be a member of his National Class Association and, if relevant, of his National Authority.

5.4 Each competitor shall be entered by his National **420** Class Association or by his Federation/National Authority if such an Association does not exist.

6. ENTRIES AND RESTRICTIONS

6.1 WORLD CHAMPIONSHIP

Entries for the World Championship shall be limited in accordance with the International **420** Class Association Guidelines: **7** boats for each country and **14** boats for the host country in each championship.

Only men or mixed crews are authorised to enter the World Championship.

6.2 LADIES WORLD CHAMPIONSHIP

Entries for the Ladies World Championship shall be limited in accordance with the International **420** Class Association Guidelines: **7** boats for each country and **14** boats for the host country in each championship.

Only ladies crews are authorised to enter the Ladies World Championship.

7. REGISTRATION

All entries shall be made on-line at the International 420 Class Website www.420sailing.org before **the 23rd June 2014**.

Please ensure that the on-line entry form is printed, the required signatures obtained and the form brought to registration.

Entry fee per boat: **300.00 EURO**.

Entry fees shall be paid in EUROS by swift to:

International 420 Class Association
Account No: 210 - 0467 - 180 - 80
BNP Paribas Fortis Nieuwpoort-Centrum, Langestraat 56,
B-8620 Nieuwpoort, BELGIUM
IBAN : BE47 2100 4671 8080
SWIFT CODE: GEBABEBB

Before: **the 23rd June 2014**

ALL BANK TRANSFERS SHOULD BE CLEARLY ANNOTATED WITH THE NAME OF THE COUNTRY, THE EVENT AND THE SAIL NUMBERS AND/OR NAMES OF THE COMPETITORS.

Each entry and fee not received by the 23rd June 2014 may not be accepted and shall be subject to a supplementary fee of 75 EURO.

Entry fees to be paid by coaches, team leaders and representatives from participating nations are **EUR 75 per person** and will be paid direct to the Organizing Authority at registration.

8. DISCLAIMER OF LIABILITY

Competitors participate in the regatta entirely at their own risk. See RRS 4, Decision to Race. The Organizing Authority and all parties involved in the regatta organization will not accept any liability for material damage or personal injury or death sustained in conjunction with or prior to, during, or after the regatta.

9. EQUIPMENT INSPECTION – CERTIFICATES

All boats shall be inspected before racing in the days specified in this Notice of Race. A boat will be eligible to compete and complete event registration after Equipment Inspection has been completed.

Each boat shall have a valid Measurement certificate, accompanied by the hull measurement form (IMF), both of which must be presented during the pre-race inspection. Only original or certified true copies of these documents shall be

accepted. Event charter boats are excluded from this obligation, but they must be accompanied by original or certified true copies of their measurement form.

Sails shall be certified and marked by an official measurer before being present for inspection. No sail shall be accepted for inspection if it is not certified according to the class rules, and no member of the equipment inspection team shall certify sails on the spot.

Random checks may be made at any time during the championships

10. SAILING INSTRUCTIONS and EQUIPMENT INSPECTION INSTRUCTIONS

The Sailing instructions will be available at the race office for each competitor and Team Leader after the final country's registration has been completed. The Equipment Inspection Instructions will be available for each competitor and Team Leader at the race office at registration.

11. LADIES CREWS IDENTIFICATION

Mainsails used in the Ladies World Championship shall carry a red rhombus (length of diagonals minimum 250mm) above the top batten pocket on both sides. The position should be approximately in the centre of the triangle formed by the top batten and the mainsail head.

12. SAFETY REGULATIONS

Competitors shall wear a life-jacket or other adequate personal buoyancy at all time when afloat (See Class rule **C.3**).

Wet suits and dry suits do not constitute adequate personal buoyancy.

13. COURSES

The courses will be trapezoid.

The target time of a race will be **45** minutes.

14. JURY, PROTESTS and PENALTIES FOR BREAKING RULES OF PART 2

An International Jury will be appointed in accordance to **RRS 91(b)**, its decisions will be final as provided in **RRS 70.5**.

15. SCORING

15.1 RRS appendix **A** will apply.

15.2 Qualifying series:

All 6 qualifying races must be completed to constitute the qualifying series.

The championships will be valid if, at least, the qualifying series are completed.

All race scores from the qualifying series will be carried forward to the Final series.

15.3 Final series

There will be 6 races in the final series.

15.4 Single series

There will be 12 final races in the single series.

15.5 Discards

- When fewer than 5 races have been completed, a boat's series score is the total of her race scores,
- When 5 or more races have been completed, a boat's series score is the total of her race scores excluding her worst score,

No more than **three** races can be competed each day.

16. PRIZES

The first **three** crews in each fleet shall be given a trophy.

The first **three** World crews in the **gold fleet** shall receive a **Gold, Silver** and **Bronze** medal.

The first **three** Ladies World crews in the **gold fleet** shall receive a **Gold, Silver** and **Bronze** medal

The first **Junior** World crew shall receive a medal.

The first **Junior** Ladies World crew shall receive a medal.

The prizes are given to both members of a crew.

17. TITLES

The title of **International 420 Class World Champion** will be awarded to the first team in the ranking list of the World Championship.

The title of **International 420 Class Ladies World Champion** will be awarded to the first team in the ranking list of the Ladies World Championship.

The title of **International 420 Class Junior World Champion** will be awarded to the first junior team in the ranking list of the World Championship.

The title of **International 420 Class Junior Ladies World Champion** will be awarded to the first junior ladies team in the ranking list of the Ladies World Championship.

A junior team is defined as a crew with his or her 19th birthday on or before 31.12.2014 (i.e. born after 31st December 1995) for both members of the crew.

18. COACH BOAT AND SUPPORT PERSONAL

All coach and support boats shall display the 3 letter national code of their ISAF Member National Authority at all times while afloat clearly visible from both sides of the boat and the number code of the organizing authority. The minimum height for the letters shall be 200 mm.

All registered support boats shall act as rescue boats in case of need (more details in Sailing Instructions).

All support boats shall have third party liability insurance with a minimum cover of EUR 1,000,000 per event or equivalent. A certificate of such insurance shall be shown during registration.

19. INSURANCE

Each competitor shall produce on registration, an evidence of valid third party insurance with a minimum cover of **1.000.000** EURO or the equivalent in other currencies.

Each participant warrants the suitability of his or her boat for the event.

20. RIGHTS TO USE NAMES & LIKENESSES

By participating in the regatta competitors automatically grant to the International 420 Class Association and to the organizing authority and their sponsors, the right in perpetuity to make, use and show, from time to time at their discretion, any motion pictures and live, taped or filmed television and other reproductions of the athlete during the period of the competition without compensation.

21. CAMERAS AND ELECTRONIC EQUIPMENT

Boats may be required to carry cameras, sound equipment or positioning equipment as specified by the Organizing Authority.

GENERAL INFORMATION(not part of the NoR)

About the Club/venue:



.....

Event area on Peninsula Priwall
Location details see appendices!
Venue Opening: 21 July 2014 09.00 hrs

For further information please contact the organizers.

Die TRAVEMÜNDER WOCHE gemeinnützige GmbH
Trelleborgallee 2a D-23570 Travemünde Germany
Phone: +49-4502 - 8 69 0-0
Fax: +49-4502 - 8 69 0-22
info@travemuender-woche.de
www.travemuender-woche.de

Contact person in charge:
Birgit Stamp-Oehme
birgit.stamp-oehme@lyc.de
Cell: +49-170-5893085

Social activities:

- Sunday 27.07 at 19:00 – Opening Ceremony together with closing Ceremony of 125 Travemuende Week, Fireworks.
- Thursday 31.07 - Reception of the Hanseatic town of Lübeck on the square rigger „Passat“
- Friday 3.08 at 18:00 - Prize Giving AND Closing Ceremony

Support boats:

Support boats shall be moored in Priwall Passathafen and will be craned there.
Support boat drivers need craning equipment.

All coaches and other support personnel shall wear personal flotation devices. The driver shall be connected to the boat using the quick-stop at all time.

Charter boats:

The boat service Gerd Eiermanns the World Cup exclusive charter boats offer (e-mail: mail@eiermann.de). The company also offers a repair service at the event area.

Bootsservice Gerd EiermannGmbH
Albert Hahn Str.24
47269 Duisburg

Phone: +49 (0) 203 – 764242
Fax: +49 (0) 203 – 765070
E-Mail: mail@eiermann.de
www.eiermann.de

Accommodation & Travel:

There are a limited number of camping and tent sites available on the venue.
Places can only be guaranteed when bookings are made via the Travemünde Week online system until the closing date. First come first served!

What to pay:

Tent < 5 m³ – 5,50 € per night

Tent > 5 m³ – 11,00 € per night

Caravan < 5 m – 11,00 € per night

Caravan > 5 m – 16,50 € per night

When booking after the entry closing date there is no guarantee for getting a slot.

Arrivals from Tuesday 25 July, 09.00 hrs. Departures until Monday 4 August, 11.00 hrs (latest!).

For further booking accommodations please contact:

Lübeck und Travemünder Marketing GmbH
Holstentorplatz 1
23552 Lübeck

Phone: + 49 (0) 451 – 889 970 0
Fax: +49 (0) 451 – 40 91 99 2
E-Mail: zimmer@luebeck-tourismus.de
E-Mail: info@luebeck-tourismus.de

www.luebeck-tourismus.de
www.travemunede-tourismus.de

Landal Green Parks Travemünde
Meeresrauschen 2
23570 Travemünde

Phone: +49 (0) 4502 – 309499
E-Mail: info@landal.de
www.landal.de

How to get to Travemünde

by car: [Google-Maps](#) (Adress: Lübecker Yacht-Club, Trelleborgallee2a, 23570 Lübeck)

by train: connection to Hamburg and Lübeck (train information) www.bahn.de

by ferry: ferry lines to Scandinavia and Russia www.faehren.de

by plane: Airport Hamburg www.airport.de (70 minutes), Airport Lübeck www.flughafen-luebeck.de (20 minutes)

Weather and current:

Weather conditions in July:

normally summer conditions with wind from north-east or north-west of 4 – 15 knots

Average Temperature:

Air 20 degrees Celsius and Water: 18 degrees Celsius

Current:

In- and outgoing current only with the wind

We use the site [windfinder.com](http://www.windfinder.com)

Please find below the direct link to our location, which is Travemuende

<http://en.windfinder.com/forecast/travemuende>

Other information:**Container storage:**

- Available on site, please contact us in advance.

Training before the event

- in Course area HOTEL (see Appendix A)

River Travel

Speed limit 6 knots.

Right side traffic.

Ferries always with right of way.

Safety plan for sailors in case of difficult weather conditions and emergency

Will be providing onsite.

We can provide insurance

PantaeniusGmbH & Co. KG

OlePietschke

GrosserGrasbrook 10

20457 Hamburg

Phone: +49 (0) 40 – 37 09 11 62

opietschke@pantaenius.com

www.pantaenius.com

Sail repair service

Haase-Segel

GneversdorferWeg 9

23570 Travemünde

Phone: +49 (0) 4502 – 2038

E-Mail: info@haase-segel.de

www.haase-segel.de

Segelmacherei Martel

PötenitzerWeg 9

23570 Travemünde

Phone: +49 (0) 4502 – 7776889

E-Mail: volker@martel-segel.de

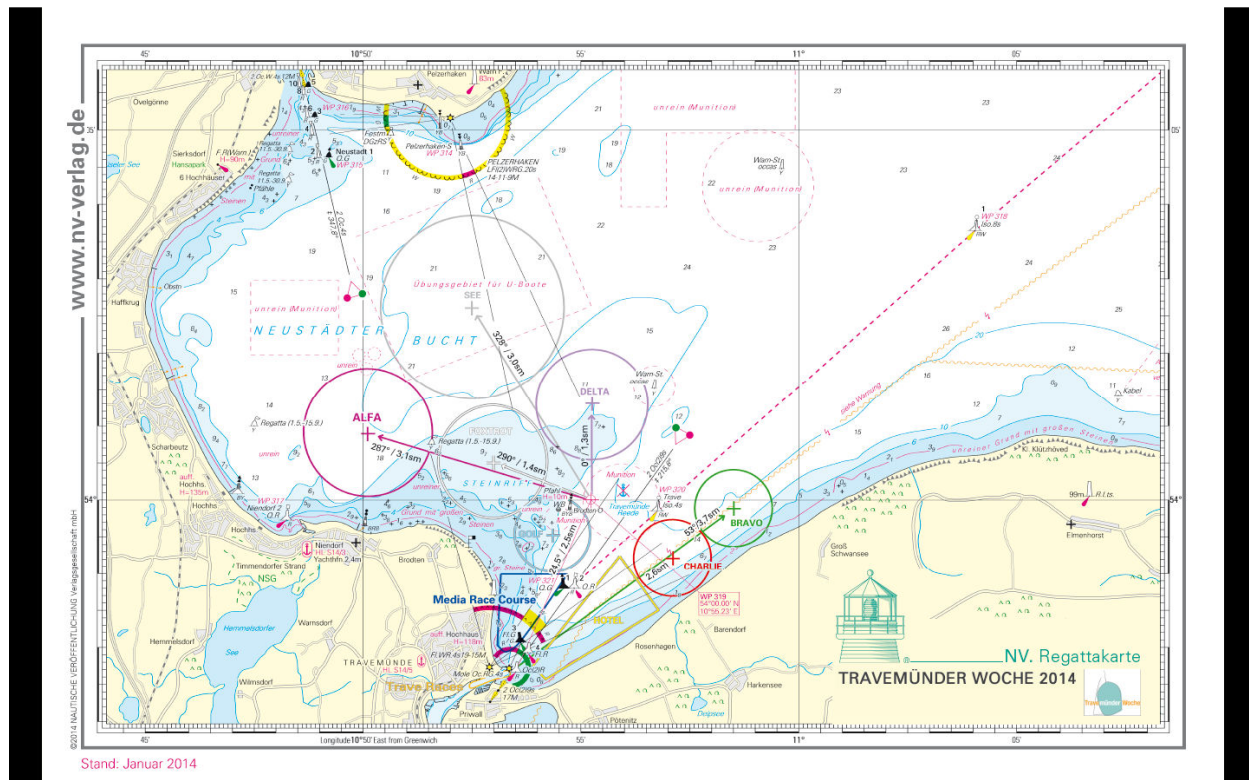
www.martel-segel.de

Sightseeing:

The old traditional Hanseatic town Lübeck is reachable by bus or train.

Appendix A

RACING AREA



Appendix B

General venue map



Appendix C

Where to find what

