



2012-13

NOTICE OF RACE

ISAF Sailing World Cup - Sail Melbourne

December 2nd – December 8th 2012

Racing conducted by Sandringham Yacht Club (inc)

With support from

Sandringham Yacht Club, Black Rock Yacht Club, Blairgowrie Yacht Squadron, Davey's Bay Yacht Club, Mordialloc Sailing Club, Royal Geelong Yacht Club, Royal Melbourne Yacht Squadron, Royal Yacht Club of Vic and Sorrento Sailing and Couta Boat Club



2013 ISAF Sailing World Cup Regatta - Sail Melbourne

NOTICE OF RACE

The ISAF Sailing World Cup- Sail Melbourne regatta will be held on Port Phillip, Sandringham, Victoria, Australia from December 2nd 2012 to December 8th 2012.

The Organising Authority is Yachting Victoria (YV) inc.

1. RULES

- 1.1 The regatta will be governed by the rules as defined in The Racing Rules of Sailing 2009-2012 (RRS).
- 1.2 For fleet racing, RRS Appendix P, Special Procedures for Rule 42, will apply.
- 1.3 For medal races, ISAF Addendum Q, Umpired Fleet Racing, available on the ISAF website (<http://www.sailing.org/>), will apply and changes a number of racing rules. The version that is current when the regatta begins will appear in full in the Sailing Instructions.
- 1.4 For Paralympic events:
 - 1.4.1 Section K of the International 2.4mR Class rules will apply.
 - 1.4.2 SKUD 18 Class Rules Section J3 will apply.
- 1.5 The Yachting Australia Prescriptions do not apply
- 1.6 If there is a conflict between languages the English text will take precedence.

2. ADVERTISING AND BOW NUMBERS

- 2.1 Boats may be required to display bow numbers and advertising chosen and supplied by the organising authority.
- 2.2 In accordance with ISAF Regulation 20.6.5, competitors aboard the boats ranked first, second and third in the series at the beginning of that day, shall wear yellow, blue and red bibs respectively while racing. The bibs will be provided by the organising authority.

3. ELIGIBILITY AND ENTRY

- 3.1.1 Competitors and coaches shall enter by completing the on-line entry form on the event website www.sailmelbourne.com.au and paying the required fees. On-line entry opens on 30th July 2012. Entries must be received no later than **1700hrs on 1st October 2012**. To qualify for the early entry fee. (Refer Fees).
No entry will be accepted after 1700hrs on 26th November 2012

- 3.2 The ISAF Eligibility Code shall apply to Olympic classes or where otherwise required by the class rules. Each athlete shall be registered as an ISAF Sailor on the ISAF website: www.sailing.org/isafsailor. Your ISAF sailor ID for both Skipper and Crew will be required to complete the online entry.
- 3.3 Unless otherwise approved by the IOC or the ISAF Executive, each competitor shall be a national of the country of the Member National Authority (MNA) under which the boat enters. This requirement does not apply to a crew member who receives approval to compete in the regatta from the MNA of the person in charge. Each competitor shall present proof of their nationality or the approved waiver at registration.
- 3.4 Olympic gender requirements will apply for each Olympic class event with the exception of the Multihull (Nacra 17) class event. Men and mixed teams are not eligible to compete in women's events. Women are not eligible to compete in men's events.
- 3.5 Competitors under 18 years of age shall present a signed and completed parent (or guardian) consent and declaration form at registration. The forms are available for download on the event website www.sailmelbourne.com.au
- 3.6 For the Paralympic events, only competitors or teams that meet the Minimum IFDS class requirements will be scored for Sailing World Cup points. Other teams are eligible to compete in the event.

Event	Class	Event Quota
Men's One Person Dinghy	Laser	150
Women's One Person Dinghy	Laser Radial	120
Men's One Person Dinghy Heavy	Finn	80
Men's Two Person Dinghy	470-M	120
Women's Two Person Dinghy	470-W	80
Men's Two Person Dinghy (High Performance)	49er	100
Women's Two person Dinghy (High Performance)	49FX	80
Multihulls (open)	Nacra 17	80
Men's Kite Boarding	IKA	Open
Women's Kite Boarding	IKA	Open
Paralympic One Person Keelboat	2.4mR	open
Paralympic Two Person Keelboat	SKUD18	open
Paralympic Three Person Keelboat	Sonar	open
Liberty Access		open

International Cadet Dinghy		open
International Optimist Dinghy		open
Laser 4.7 Dinghy		open
International 420 Dinghy		open
International 29er Skiff		open
Hobie 16		open
Laser Radial men		open
Ok Dinghy		open
Tasar Dinghy		open

- 3.7 The regatta is open to boats competing in events chosen for the 2016 Olympic Sailing Competition, the 2012 Paralympic Sailing Competition and other classes as listed in NOR 3.6.
- 3.8 The organising authority may cancel or make other arrangements for an event if the minimum number of 4 (four) entries have not been received by midnight (local time), 1st November 2012. Competitors will be notified of cancelled or rearranged events by email and posting on the event website. The entry fees for cancelled events will be refunded.
- 3.10 For any event in which the number of applications exceeds the Event Quota on midnight (local time), 1st November 2012, the following procedure will apply.
- 3.10.1 The MNAs of the applications received will be sorted in Priority Order, based on the ranking of each MNA in the ISAF Sailing World Cup standings as of 1st October 2012.
- 3.10.2 Ties in the Priority Order will be resolved in favour of the MNA with the higher ranking in the most recent SWC event(s) in which any tied MNA appears. Remaining ties will be broken in favour of the MNA whose earliest entry application was received first. MNA's not appearing in the applicable SWC standings shall be sorted by application date and added at the end of the MNA Priority Order.
- 3.10.3 The Applications will be accepted, as follows, until the quota is filled:
- (a) One place awarded to the host MNA.
 - (b) One place, awarded in MNA Priority Order, for each MNA with a remaining entry application.
 - (c) Repeat 3.9.3(b) above until the quota is filled.

4. IFDS FUNCTIONAL CLASSIFICATION

- 4.1 Disabled sailors shall have valid International Classification under the 2009-2012 IFDS Functional Classification System.

5. FEES

- 5.1 Fees are stated in Australian currency (AUD) and include any local taxes. Entries received by 1700hrs, 1st October 2012 will qualify for the early Entry fee.

Class Olympic	Early Entry Fee	Entry Fee
Single Handed Classes	\$250.00	\$300.00
Double Handed Classes	\$350.00	\$450.00
Triple Handed Classes	\$500.00	\$600.00
Coach Boats	\$50.00	\$100.00

Class Invited	Early Entry Fee	Entry Fee
Laser Radial men	\$250.00	\$300.00
Laser 4.7	\$250.00	\$300.00
Cadet Dinghy	\$150.00	\$200.00
Tasar	\$125.00	\$150.00
OK Dinghy	\$100.00	\$150.00
Hobie 16	\$350.00	\$450.00
29er Skiff	\$350.00	\$450.00
420 Dinghy	\$350.00	\$450.00
Liberty Access	\$250.00	\$300.00
Optimist	\$150.00	\$200.00
Coach Boat	\$50.00	\$100.00

- 5.2 If an entry is cancelled by the competitor, the entry fee will be refunded as follows:

Cancellation Date	Entry Fee Refund
Before 1 st October 2012	100%
After 1 st Oct, before 1700hrs on 26 th Nov 2012	50%

6. FORMAT

- 6.1 For fleet racing, the regatta will consist of an opening series and, for Olympic events, a medal race. The opening series may be divided into a qualifying series and a final series. The top ten finishers in the opening series of each event will advance to the medal race. For Paralympic events and the invited classes events, the regatta will consist of a single series.

7. SCHEDULE

- 7.1 Registration for competitors, coaches and team leaders is scheduled to begin 0900hrs on 2nd Dec 2012 until 1700hrs 2nd Dec 2012 and between 0900hrs on 3rd Dec until 1100hrs 3rd Dec at Sandringham Yacht Club
- 7.2 The first briefing for coaches and team leaders is scheduled for 1000hrs on 3rd Dec 2012 at Sandringham Yacht Club
- 7.3 The competitors information briefing will be scheduled for 1000hrs on the 3rd Dec 2012 at Sandringham Yacht Club.

7.4 The schedule of races including medal races, in any, and dates of racing is as follows:

Event	Racing Dates	Number of Races
Men's One Person Dinghy Laser	3 rd – 8 th Dec	10 + Medal
Women's One Person Dinghy	3 rd – 8 th Dec	10 + Medal
Men's One Person Dinghy Heavy	3 rd – 8 th Dec	10 + Medal
Men's Two Person Dinghy	3 rd – 8 th Dec	10 + Medal
Women's Two Person Dinghy	3 rd – 8 th Dec	10 + Medal
Men's Two Person Dinghy High Performance	3 rd – 8 th Dec	15 + Medal
Women's Two Person Dinghy High Performance	3 rd – 8 th Dec	15 + Medal
Men's Kite Board	3 rd – 8 th Dec	11 - 16
Women's Kite Board	3 rd – 8 th Dec	11 - 16
Multihull (Nacra 17)	3 rd – 8 th Dec	10 + Medal
Mens one person Dinghy Laser Radial	3 rd – 8 th Dec	10
Paralympic One Person Keelboat	3 rd – 8 th Dec	10
Paralympic Two Person Keelboat	3 rd – 8 th Dec	10
Paralympic Three Person Keelboat	3 rd – 8 th Dec	10
Liberty access	3 rd – 8 th Dec	10
Optimist Dinghy	4 th - 8 th Dec	10 -12
Cadet Dinghy	4 th - 8 th Dec	10 - 12
29er	3 rd - 8 th Dec	15
420 Dinghy	3 rd - 8 th Dec	10
Laser 4.7	3 rd - 8 th Dec	10
Hobie 16	3 rd - 8 th Dec	10
OK Dinghy	6 th - 8 th Dec	6
Tasar	6 th - 8 th Dec	6

7.5 The Starting time for the first race will not be before 1200 hrs on the 3rd Dec 2012.

7.6 On the last day of racing, no warning signal will be made after 1700hrs for fleet racing.

8. MEASUREMENT

- 8.1 Competitors shall provide copies of any measurement certificates required by class rules at the time of registration.
- 8.2 Competitors shall produce evidence of membership of the appropriate class association at the time of registration as may be required by the organising authority.
- 8.3 All boats shall display national letters on their sails as required by rule G1.1(b).
- 8.4 Boats may be subject to inspection at any time during the event. The procedures for inspections will be specified in the sailing instructions or event measurement regulations.
- 8.5 The equipment limitations as specified in the class rules shall apply.
- 8.6 As beach trailers/dollies will be shared during the regatta, all boats shall be presented for Measurement on serviceable beach dollies. 'Serviceable' specifically includes being fitted with pneumatic tyres at least 60 mm wide (or equivalent) and have adequate padding. Any boat presented on an unsatisfactory or unserviceable beach trailer/dolly will be refused entry at Measurement.

9. SAILING INSTRUCTIONS

Sailing Instructions will be available beginning Monday 26th November 2012 on the event website and at registration. Measurement, Support Boat docs' and other documents governing the event will be published with the sailing instructions.

10. VENUE

10.1 The regatta will be at Sandringham, Melbourne, Australia. Addendum B shows the location of the regatta harbour.

10.2 The racing area will be on the waters of Port Phillip in the vicinity of Sandringham Yacht Club

11. THE COURSES

The courses will be Windward/Leeward or Trapezoid or any other courses adopted by ISAF for the 2016 Olympic Sailing Competition.

12. PENALTY SYSTEM

For the Multihull, Men's Two Person Dinghy High Performance, Women's Two Person Dinghy High Performance, International 29er and Two Person Paralympic events, RRS 44.1 and RRS P2.1 are changed so that the Two-Turns Penalty is replaced by the One-Turn Penalty.

13. INTERNATIONAL JURY

An International Jury will be appointed in accordance with RRS 91(b).

14. SCORING

- 14.1 The Low Point System of RRS Appendix A will apply
- 14.2 At least 3 races are required to be completed to constitute a regatta. When 5 or more opening series races have been completed, a boat's series score will be the total of her race scores excluding her worst score.
- 14.3 In medal races, a boat's score shall be double the number of points specified in RRS Appendix A4.1, and the score for that race shall not be excluded from the series score.
- 14.4 Ties in the series score between boats with different medal race point scores shall be broken in favour of the boat that scored better in the medal race. This changes RRS Appendix A8.

15. SUPPORT BOATS AND PERSONNEL

- 15.1 All support boats shall be registered with the organising authority and will be required to comply with local legislation and event support boat regulations. The organising authority may refuse registrations and accept later registrations at their sole discretion. Local marine regulations specify the safety equipment to be carried and conditions under which life jackets (PFD 1) are to be worn. A copy of the regulations is available at <http://www.transportsafety.vic.gov.au/maritime-safety/recreational-maritime/safety-equipment/safety-equipment-for-powered-vessels> and <http://www.transportsafety.vic.gov.au/maritime-safety/recreational-maritime/safety-equipment/personal-flotation-devices>
- 15.2 All support boats shall clearly display the 3 letter national code of their ISAF Member National Authority at all times while afloat. The minimum height for the letters shall be 200 mm.
- 15.3 Support boats with team leaders, coaches and other support personnel shall stay outside areas where boats are racing from the time of the starting sequence until all boats have finished or the race committee signals a postponement, general recall or abandonment.

16. BERTHING

Boats shall be kept in their assigned places in the boat park or harbour.

17. HAUL-OUT RESTRICTIONS

Boats assigned places in the harbour shall not be hauled out during the regatta, except with and according to the terms of prior written permission of the Race Committee.

18. DIVING EQUIPMENT AND PLASTIC POOLS

Underwater breathing apparatus and plastic pools or their equivalent shall not be used around keelboats between the preparatory signal of the first race and the end of the regatta.

19 RADIO COMMUNICATION

Except in an emergency, a boat shall neither make nor receive radio transmissions, text messages or cellular phone calls while racing except in an emergency or when using equipment provided by the race committee.

20 PRIZES

20.1 Medals will be awarded to the top 3 boats in each event. The Organising Authority may alter prizes if less than 10 boats are entered in an event.

21 INSURANCE

Each participating boat shall present a valid insurance certificate showing proof of third-party liability coverage of at least AUD \$5,000,000 (recommended \$10,000,000) (or equivalent) per incident.

22 DISCLAIMER OF LIABILITY

Competitors participate in the regatta entirely at their own risk. See rule 4, Decision to Race. Neither the organising authority nor ISAF will accept any liability for material damage or personal injury or death sustained in conjunction with or prior to, during, or after the regatta.

23 MEDIA RIGHTS, CAMERAS AND ELECTRONIC EQUIPMENT

23.1 By participating in an event of the ISAF Sailing World Cup competitors automatically grant to the organising authority, ISAF and their sponsors, the right in perpetuity to make, use and show, from time to time at their discretion, any motion pictures and live, taped or filmed television and other reproductions of the athlete during the period of the competition without compensation.

23.2 Boats may be required to carry cameras, sound equipment or positioning equipment as specified by the organising authority.

23.3 The top three competitors as well as the individual race winners may be required to attend a media press conference each day.

23.4 Competitors may be required for interviews at the regatta.

24 FURTHER INFORMATION

For further information please contact :-

Sail Melbourne Asia Pacific Regatta 2013
C/o Yachting Victoria
PO Box 83 / 77 Beach Rd Sandringham. Victoria 3191, Australia.
Tel: +61 3 9597 0066
Fax: +61 3 9598 7384
E-mail: info@sailmelbourne.com.au
Website: www.sailmelbourne.com.au

25. AMENDMENTS

Any amendment to this Notice of Race will be posted on the event web site:
www.sailmelbourne.com.au

ADDENDUM A

ISAF Sailing World Cup Series

A1 REGATTAS

The 2013 ISAF SAILING WORLD CUP series is comprised of the following regattas:

Sail Melbourne – Melbourne, AUS

Trofeo SAR Princesa Sofia MAPFRE – Palma Majorca, ESP

Semaine Olympique Francaise – Hyeres, FRA

ISAF may add additional regattas to the series in the future.

A2 Property

The ISAF Sailing World Cup is owned by ISAF.

A3 Eligibility, Entry and Quotas

A3.1 For the purposes of determining the MNA Priority Order used in establishing eligibility and quotas, the order of each MNA's highest appearance in the ISAF World Rankings as of the Entry Quota deadline date.

A3.2 MNA's not appearing in the ISAF World Rankings shall be sorted by application date and added at the end of the MNA Priority Order.

A4 Prizes and World Ranking Points

A4.1 ISAF may award prizes for SWC competition, in a format and number to be determined.

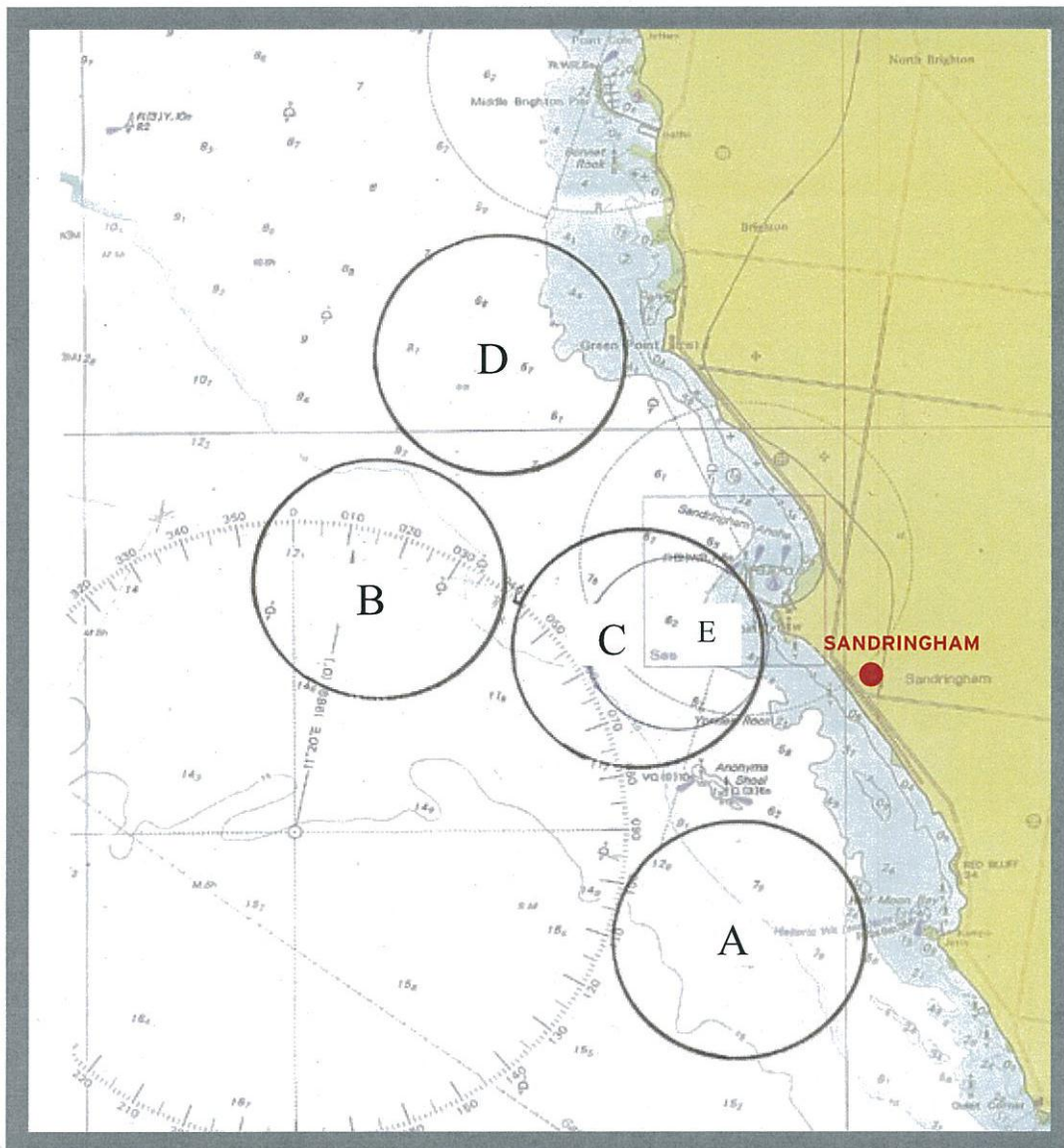
A4.2 The date, time and location of the of the SWC prize giving, if any, will be announced by ISAF.

A4.3 A boat placing first, second or third in the regatta will forfeit the ISAF World Rankings points if they fail to attend the prize giving ceremony without prior written permission from the organizing authority.

ADDENDUM B



Host Venue



ISAF Sailing World Cup – Sail Melbourne 2012 Coach Boat Agreement

Entry to the SYC Yard, Marinas and involvement in the ISAF Sailing World Cup -Sail Melbourne is conditional on providing the following details and agreeing to the following conditions:

Association:		Contact Name:	
Vessel Name:		Call Sign:	
Phone: (Mobile)			
Purpose of Use:			
Date from:		Date to:	
Name of Skipper:			
Designated drivers 'Boating Licence' Number:			
Other Qualifications:			

BOAT DETAILS

Type of vessel:	RIB <input type="checkbox"/>	Hard Hull <input type="checkbox"/>	Make:	
Boat Rego:			Boat Length:	
			Engine type & capacity:	
Insurance:	Name of Insurer:		Policy No.	
Trailer Rego:			Exp Date:	

TERMS & CONDITIONS OF ENTRY

1. The craft shall only be moored in the location as directed by SYC staff or representative. Specifically vessels are not to be moored at the crane or launching ramp pontoons **at any time**.
2. All boats must have a VHF radio, and maintain a listening watch on the channels specified by the Race Management Team. All skippers must attend a briefing with Race Management Team at *a time to be advertised* for other instructions.
3. Coach / support boats must have documented evidence showing current public liability insurance to the value of \$5,000,000.

4. Coach / support boats will assist in the event of an emergency if directed to do so by the Race Management Team.

I agree to abide by the conditions set out above.

Signed: _____

Date: _____

Print Name: _____